



**FLICK IT**



**CHASE IT**



**LOVE IT**

# CAT TEASER

**WWW.PTACIS.COM**



# NON EXTENDABLE STICK



**WPS001**

Handle : 48 cm  
Head Length : 24 cm

**TNE-102**

**Three Ostrich Feathers**  
Handle : 40 cm  
Head Length : 28 cm

**TNE-098**

**Ostrich Feather  
Wooden Handle**  
Handle : 42 cm  
Head Length : 17 cm

**TNE-010**

**Pearl Velvet**  
Handle : 43 cm  
Head Length : 20 cm

**TNE-109**

**Pearlwood Handle**  
Handle : 33 cm  
Head Length : 25 cm

**TNE-002A**

**TNE-002B**

**2 Extended Feather Styles**  
Handle : 60 cm  
Head Length : 30 cm

**TNE-005**

**Multi-bead wooden handle**  
Handle : 40 cm  
Head Length : 37 cm

**TNE-009**

**Extended wood ostrich feather**  
Handle : 68 cm  
Head Length : 27 cm

# NON EXTENDABLE STICK



**TNE-004**

**Magic wand short style**  
Handle : 41 cm  
Head Length : 24 cm

**TNE-107**

**Pearly feathers**  
Handle : 42 cm  
Head Length : 18 cm



**TNE-003**

Handle : 120 cm  
Head Length : 45 cm



**TNE-099A**

**TNE-099B**

Handle : 42 cm  
Head Length : 30 cm

**🐾 EXTENDABLE STICK WITH RUBBER HANDLE**  
**🐾 4-SECTION CLUB / SHAFT**

**PRE-EXTENDED STICK : 55 CM**  
**EXTENSION LENGTH : 150 CM**  
**EXTENDED STICK : 205 CM**



**TEB-096**

**Fox 4-section club**  
 Head Length : 20 cm



**TEB-085**

**Big Tail 4-section club**  
 Head Length : 35 cm



**TEB-103**

**Big Mouth 4-section club**  
 Head Length : 15 cm



**TEB-105**

**Grape 4-section club**  
 Head Length : 20 cm



**TEB-106**

**Baby 4-section club**  
 Head Length : 15 cm



**TEB-097**

**Tail 4-section club**  
 Head Length : 23 cm



**TEB-104**

Extra Large Tail 4-section club  
Head Length : 34 cm



**TEB-011**

Turkey feather  
4-section shaft  
Head Length : 30 cm



**TEB-012**

4-section peacock  
feather knitting rod  
Head Length : 33 cm



**TEB-006**

Ostrich feather 4-section shaft  
Head Length : 37 cm



**TEB-007**

Ostrich feather peacock  
feather 4-section shaft  
Head Length : 37 cm



**TEB-008**

Turkey feather 4-section shaft  
Head Length : 20 cm



**TEB-108**

Grey large tail with 4-segment shaft  
Head Length : 30 cm

**PAW EXTENDABLE STICK WITH WOOD HANDLE**

**PAW 2-SECTION KNITTING ROD**

**PRE-EXTENDED STICK : 48 CM**

**EXTENSION LENGTH : 32 CM**

**EXTENDED STICK : 80 CM**



**TEK-013**

**2-Section Knitting Rod**  
Head Length : 25 cm



**TEK-014**

**2-Section Knitting Rod**  
Head Length : 25 cm



**TEK-015**

**2-Section Knitting Rod**  
Head Length : 25 cm



**TEK-016**

**2-Section Knitting Rod**  
Head Length : 29 cm



**TEK-017**

**2-Section Knitting Rod**  
Head Length : 29 cm



**TEK-018**

**2-Section Knitting Rod**  
Head Length : 25 cm



**TEK-019**

**2-Section Knitting Rod**  
Head Length : 22 cm



**TEK-020**

**2-Section Knitting Rod**  
Head Length : 20 cm



**TEK-021**

**2-Section Knitting Rod**  
Head Length : 20 cm



**TEK-022**

**2-Section Knitting Rod**  
Head Length : 30 cm



**TEK-027**

**2-Section Knitting Rod**  
Head Length : 25 cm



**TEK-028**

**2-Section Knitting Rod**  
Head Length : 25 cm



**TEK-029**

**2-Section Knitting Rod**  
Head Length : 25 cm



**TEK-023**

**2-Section Knitting Rod**  
Head Length : 25 cm



**TEK-024**

**2-Section Knitting Rod**  
Head Length : 25 cm



**TEK-025**

**2-Section Knitting Rod**  
Head Length : 25 cm



**TEK-083**

**2-Section Knitting Rod**  
Head Length : 20 cm



**TEK-092**

**2-Section Knitting Rod**  
Head Length : 20 cm



**TEK-081**

**2-Section Knitting Rod**  
Head Length : 21 cm



**TES-067**

Flower 2-section rod  
Head Length : 16 cm



**TES-072**

Flashball 2-section club  
Head Length : 22 cm



**TES-080**

Polka Dot 2-section club  
Head Length : 35 cm



**TES-082**

Chicken Feather Monster  
2-section club  
Head Length : 20 cm



**TES-084**

2-section knitting rod  
Head Length : 22 cm



**TES-087**

Tail 2-section club  
Head Length : 23 cm



**TES-073**

Leopard Print 2-section club  
Head Length : 30 cm



**TES-074**

Cow 2-section club  
Head Length : 31 cm



**TES-070**

Striped tail 2-section shaft  
Head Length : 34 cm



**TES-088**

Big Tail 2-section club  
Head Length : 26 cm



**TES-030**

Monster 2-section pole  
Head Length : 48 cm



**TES-036**

Purple Monster  
2-section rod  
Head Length : 25 cm



**TES-045**

Mink hair and hemp rope,  
2-section pole  
Head Length : 20 cm



**TES-046**

Mink feather, 2-section pole  
Head Length : 50 cm



**TES-050**

Pink Sheep 2-section club  
Head Length : 30 cm



**TES-059**

Pink Sheep 2-section club  
Head Length : 33 cm



**TES-100**

Gallberry Tail 2-section club  
Head Length : 30 cm



**TES-101**

Real Feather Octopus  
2-section club  
Head Length : 30 cm



**TES-051**

Monster 2-section pole  
Head Length : 32 cm



**TES-053**

Green Sheep 2-section pole  
Head Length : 30 cm



**TES-057**

Yellow Sheep 2-section stick  
Head Length : 25 cm



**TES-040**

Flashball (2-section rod)  
Head Length : 10 cm



**TES-026**

Butterfly 2-section pole  
Head Length : 17 cm



**TES-086**

Bat 2-section club  
Head Length : 30 cm



**TES-068**

Cat-shaped 2-section shaft  
Head Length : 30 cm



**TES-091**

Avocado 2-section club  
Head Length : 19 cm



**TES-094**

Rabbit 2-section club  
Head Length : 15 cm



**TES-093**

Caterpillar  
2-section club  
Head Length : 20 cm



**TES-001**

Turkey Feather  
2-Section Staff  
Head Length : 17 cm



**TES-033**

Rendered Flower  
2-section rod  
Head Length : 11 cm



**TES-034**

Goldfish 2-section rod  
Head Length : 30 cm



**TES-077**

Sparkling Feather  
2-section club  
Head Length : 15 cm



**TES-095**

Shell Feather  
2-section club  
Head Length : 22 cm



**TES-055**

Flower 2-section rod  
Head Length : 30 cm



**TES-076**

Pheasant Feather Rope  
2-section club  
Head Length : 24 cm



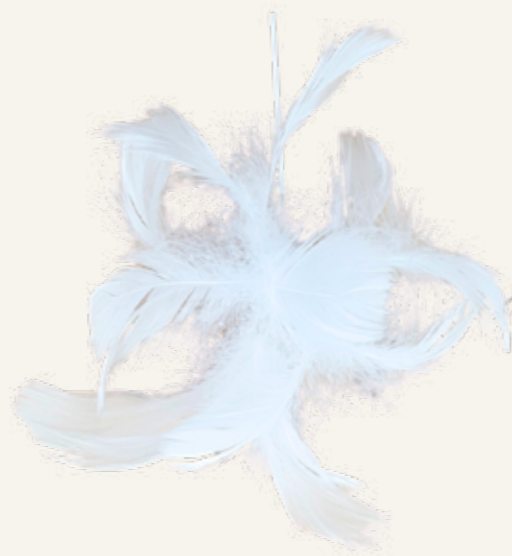
**TES-071**

Iron Lotus 2-section club  
Head Length : 23 cm



**TES-089**

Feather 2-section club  
Head Length : 14 cm



**TES-078**

Nine Feathers 2-section club  
Head Length : 19 cm



**TES-031**

Ostrich feather 2-section pole  
Head Length : 25 cm



**TES-044**

Insect (2-section rod)  
Head Length : 16 cm



**TES-041**

Insect (2-section rod)  
Head Length : 13 cm



**TES-042**

Insect (2-section rod)  
Head Length : 15cm



**TES-035**

Flower 2-section rod  
Head Length : 40 cm



**TES-052**

Flower 2-section rod  
Head Length : 38 cm



**TES-043**

Insect (2-section rod)  
Head Length : 29 cm



**TES-065**

Ribbon 2-Section Christmast  
Head Length : 55 cm



**TES-066**

Ribbon 2-Section Cudgel  
Head Length : 55 cm



**TES-060**

Flashball Ribbon 2-Section Cudgel  
Head Length : 55 cm



**TES-062**

Ribbon 2-Section Cudgel  
Head Length : 49 cm



**TES-069**

Butterfly 2-section shaft  
Head Length : 13 cm



**TES-075**

Small Ball Feather 2-section club  
Head Length : 25 cm



**TES-063**

2-section flexible hose rod  
Head Length : 72 cm



**TES-064**

2-section flexible hose rod  
Head Length : 512 cm



**TES-047**

Dragonfly feather, 2-section pole  
Head Length : 20 cm



**TES-038**

Flower Pupa 2-section rod  
Head Length : 30 cm



**TES-048**

Dragonfly, 2-section pole  
Head Length : 20 cm



**TES-061**

Butterfly Ribbon 2-Section Cudgel  
Head Length : 40 cm



**TES-079**

**Feather 2-section club**  
Head Length : 16 cm



**TES-090**

**Octopus 2-section club**  
Head Length : 22 cm



**TES-032**

**Flower 2-section rod**  
Head Length : 33 cm



**TES-037**

**Golden Bubble 2-section rod**  
Head Length : 44 cm



**TES-049**

**Flower Stamen 2-section club**  
Head Length : 38 cm



**TES-054**

**Jellyfish 2-section pole**  
Head Length : 80 cm



**TES-056**

**Ribbon 2-section stick**  
Head Length : 55 cm



**TES-058**

**White Sheep 2-section stick**  
Head Length : 47 cm